



Potato

Creating value from potatoes

Our growers were asked to take 1 sample per 250T potatoes while loading the barn.

We also store some Hansa ourselves ; from that volume we took 1 sample per truck.

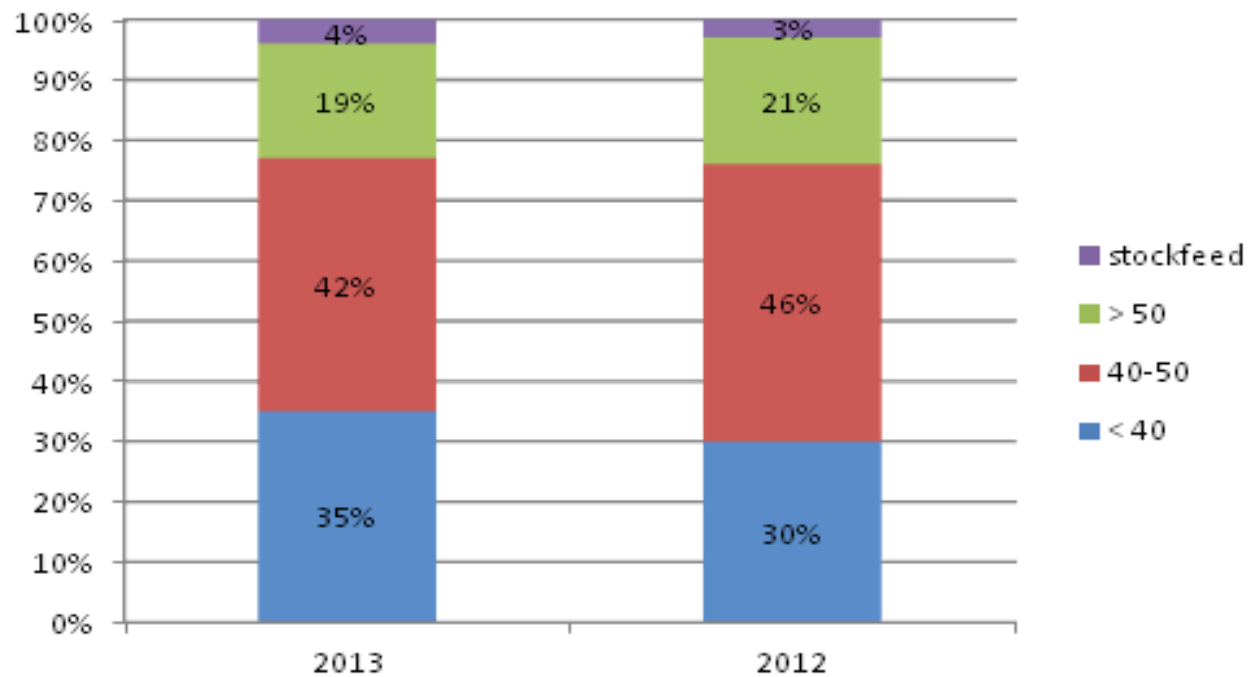
The quality department checks these samples on underwater weight, size and defects. The defects (in amount of points) include shocks, damages, wireworms, as well as green, hollow, or rotten tubers. The points are calculated on 100 tubers, and our acceptance limit is 50 points.

This week, we present all the results of the variety Hansa.

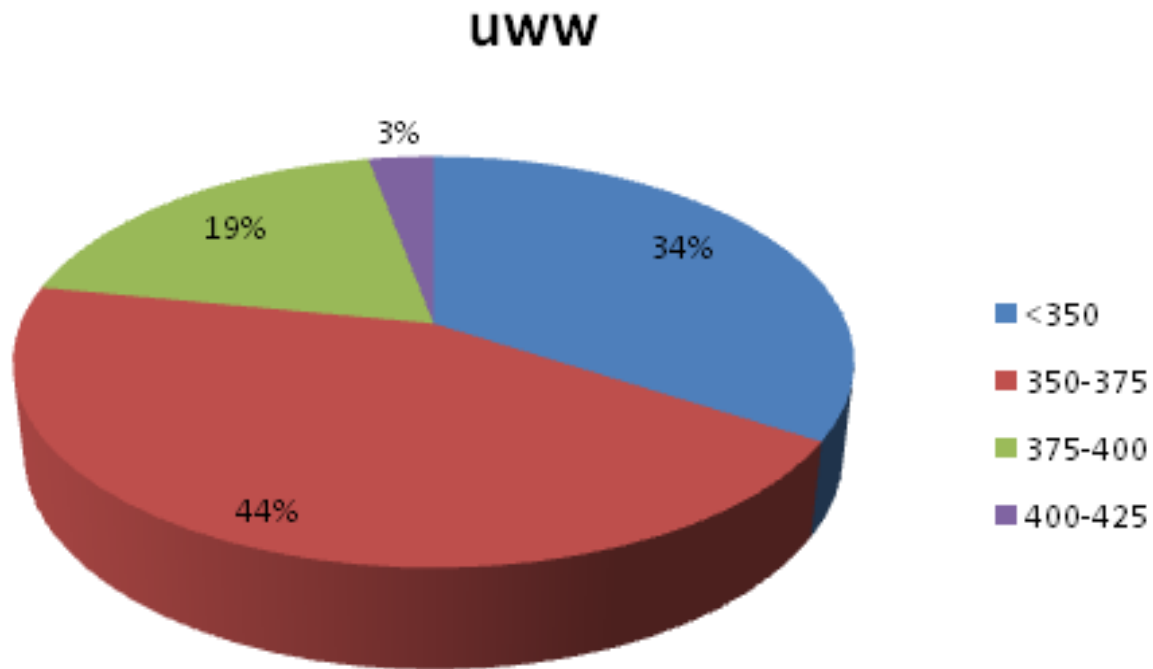
Harvest 2013 week 48

Hansa

average caliber

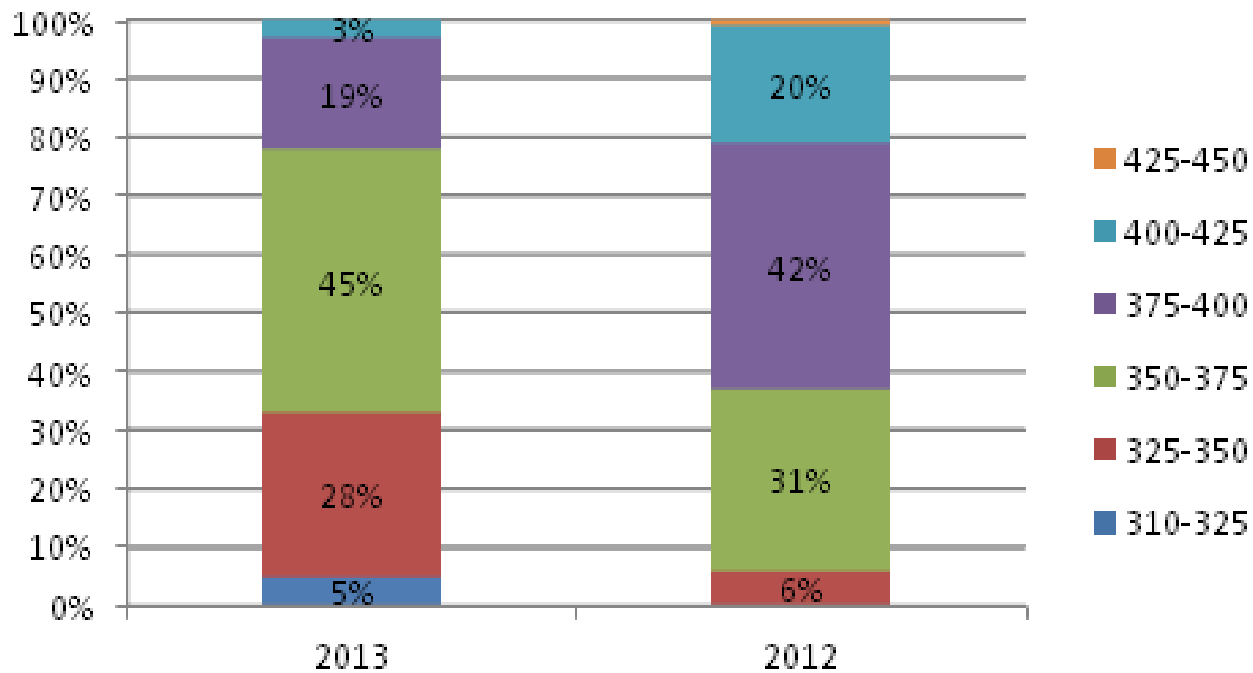


Hansa

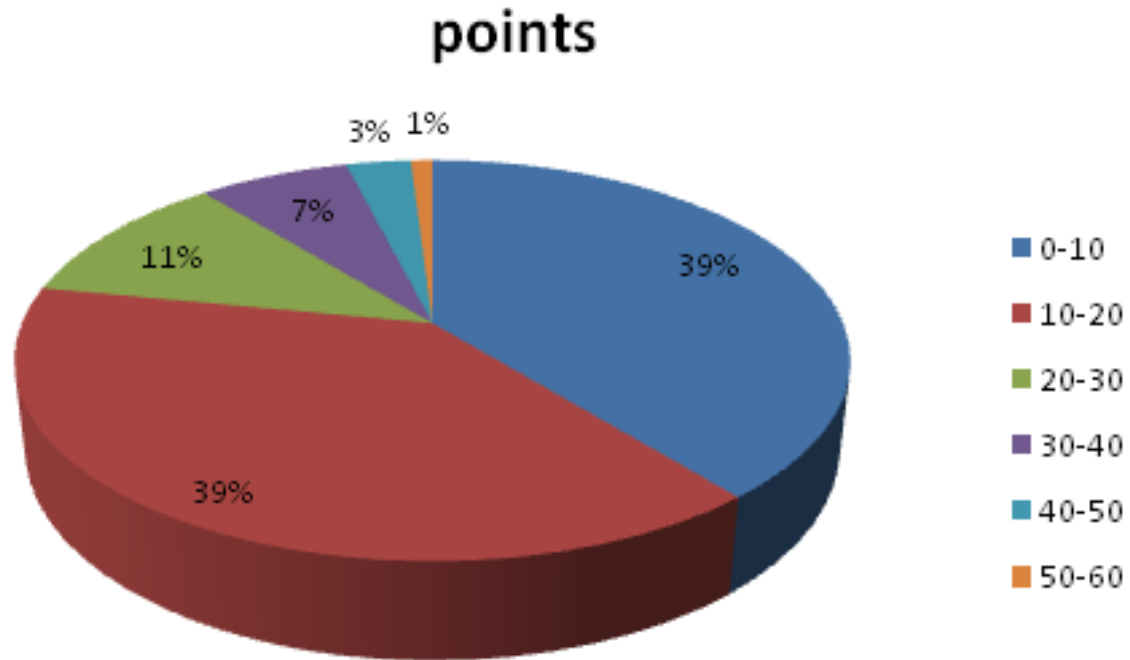


Hansa

average uww



Hansa



Hansa

average points

